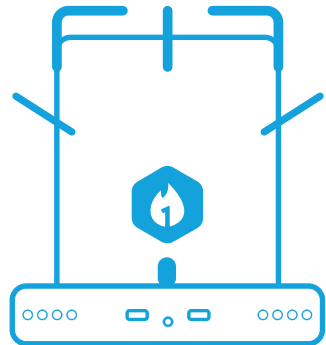


**AFRICAN CLEAN ENERGY**

# ACE One

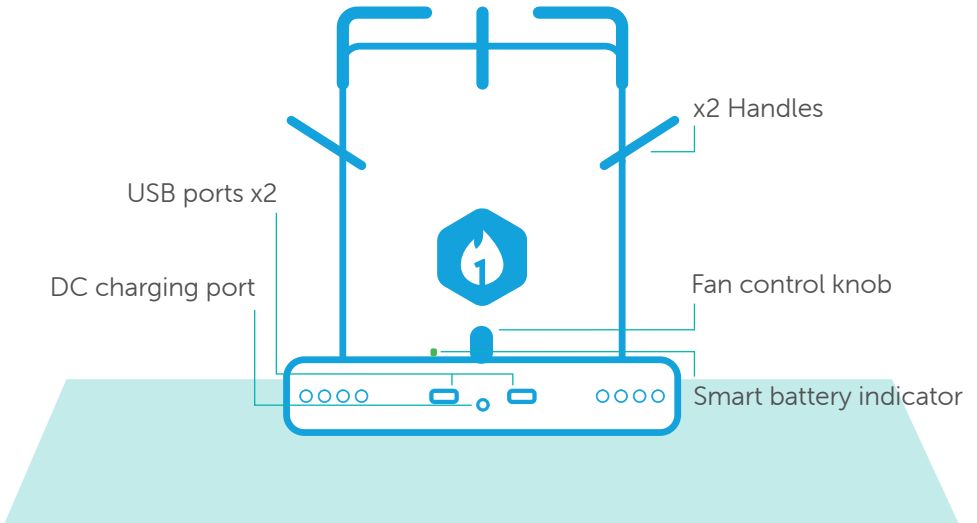
User  
Manual







# About your ACE One



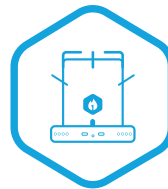
# What's included?



Solar panel



LED lamp



1-year warranty

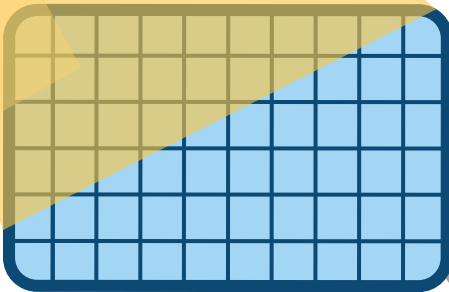


# How it works

Burning chamber  
(fuel goes in here)

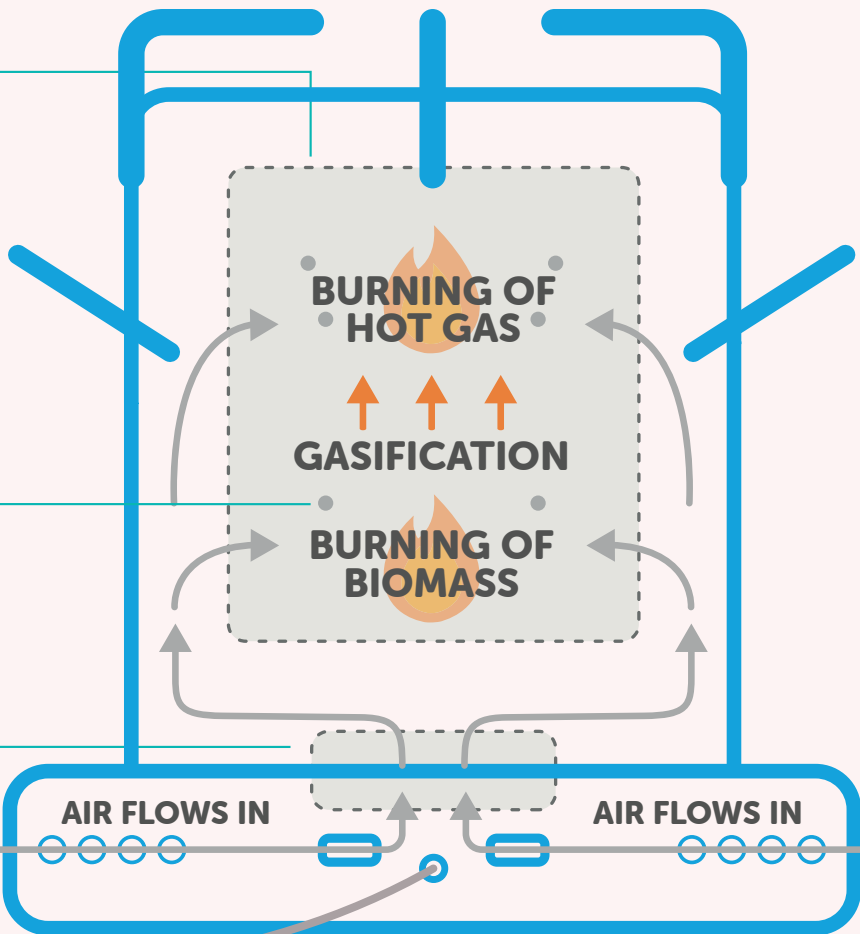
The air blows in the  
fuel chamber and  
stimulates the fire

Battery-powered fan  
creates airflow



The battery can be charged  
with the **solar panel** placed  
in the sun, or with the  
electricity grid using the  
**wall charger\***.

**OUTPUT HEAT**

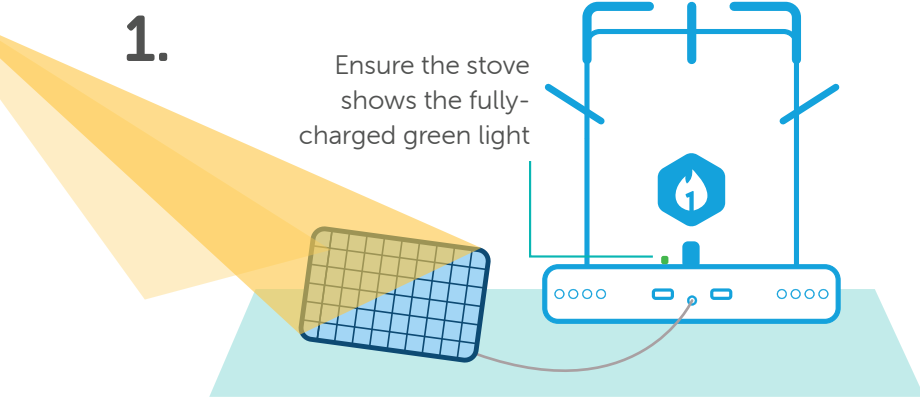




# Charging the battery

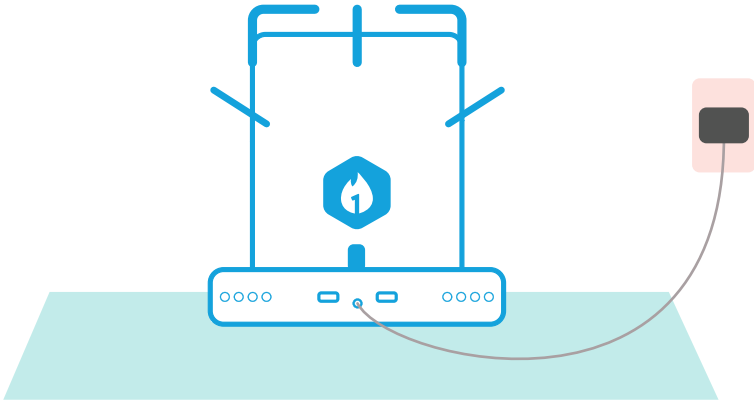
1.

Ensure the stove shows the fully-charged green light



Connect the solar panel and leave the panel **facing** the sun for the best charging performance

2.



Or plug in the wall charger\*

\*wall charger is not included



# Battery Life



**Green light:**  
Fully charged



**Orange light:**  
Low battery

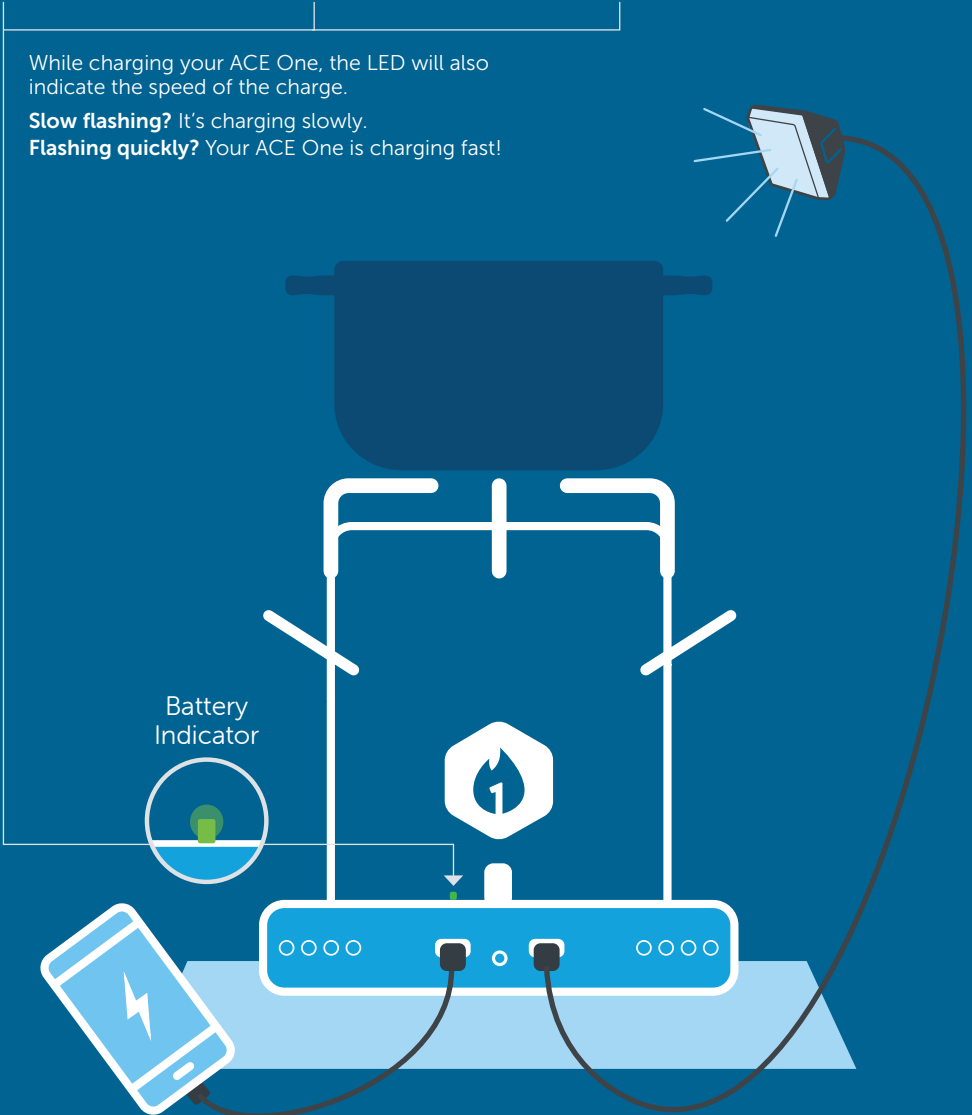


**Red light:**  
Charge now

While charging your ACE One, the LED will also indicate the speed of the charge.

**Slow flashing?** It's charging slowly.

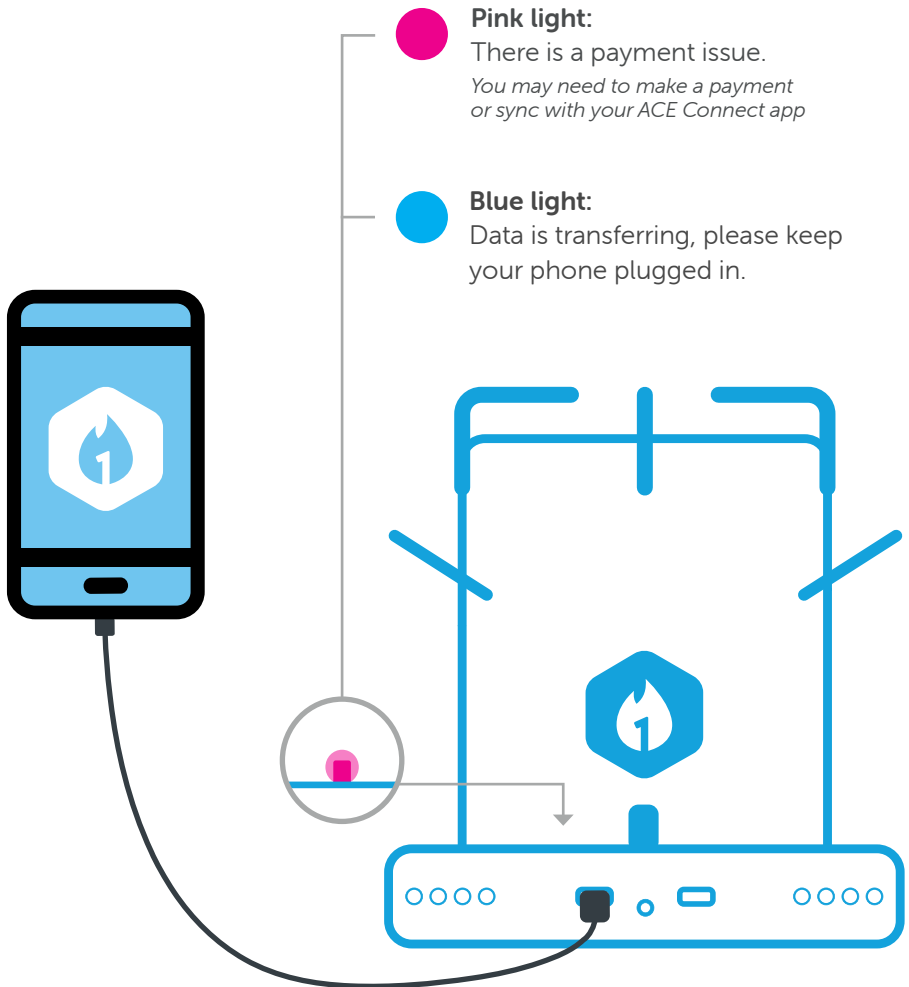
**Flashing quickly?** Your ACE One is charging fast!





# ACE Connect App

If you are an ACE Connect customer, the LED light will give indications about your credits (days remaining) and data transfers.







# Fuel types

## Types of ignition fuel

Use only natural and dry fuel



Leaves



Paper



Palm oil nuts



**No plastic bags**

## Types of cooking fuel



Wood



Biomass fuel pellets



Sticks



Corn cobs



Coconut shells



Dried cow dung

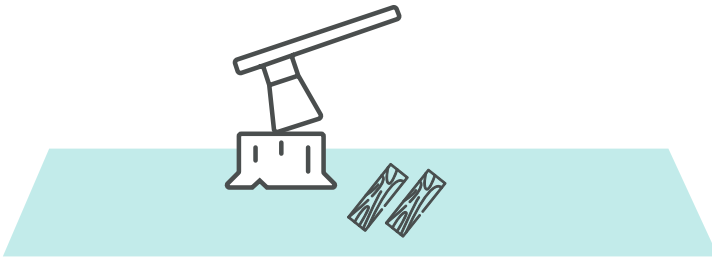


**No liquid fuel**



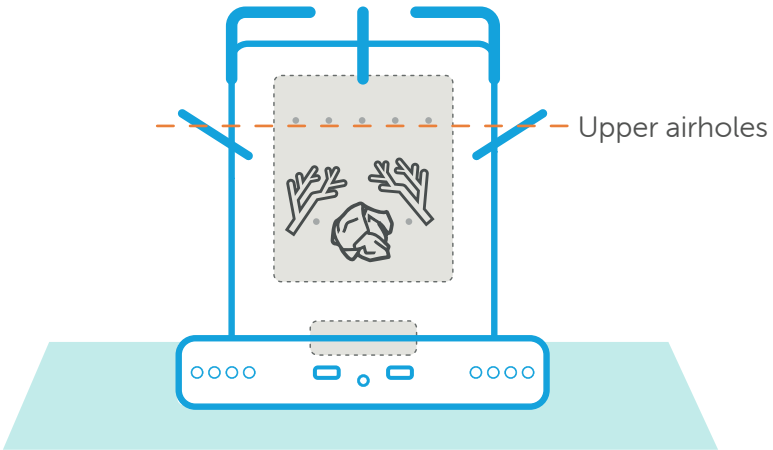
# Fuel preparation

1.



Cut **thin** pieces of wood

2.



Place the fuel in the stove **below**  
the upper airholes



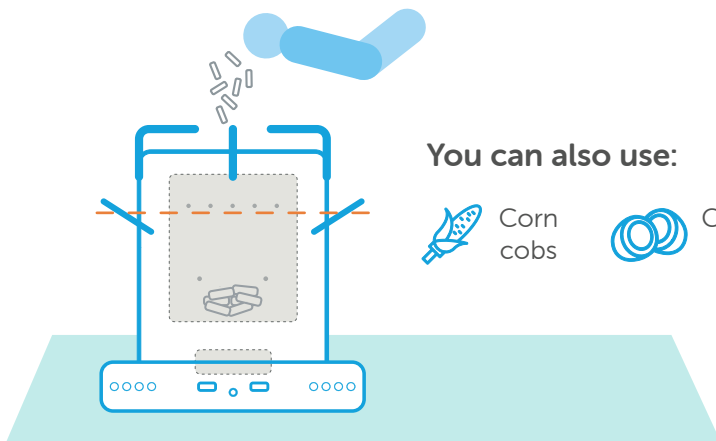
# Using wood pellets

1.



Begin by filling a jar with pellets and **soaking them in paraffin**

2.



You can also use:



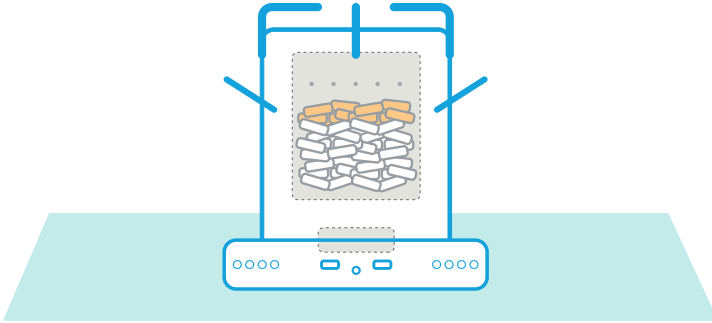
Corn cobs



Coconut shells

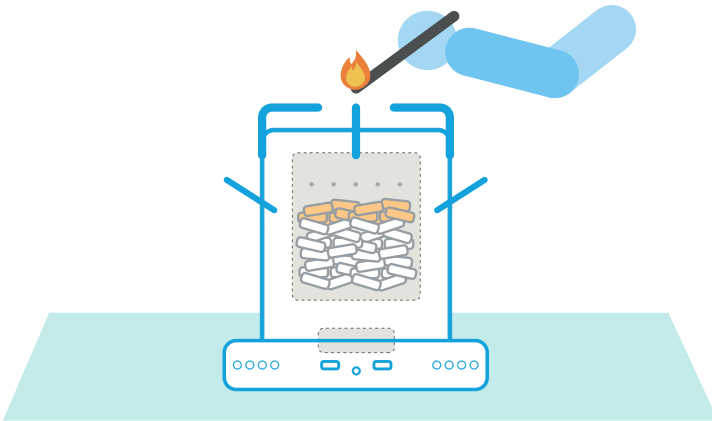
Add dry pellets into the stove  
(maximum level is **just below the top air holes**)

3.



Add a thin layer of **paraffin soaked pellets** on top of the dry pellets

4.

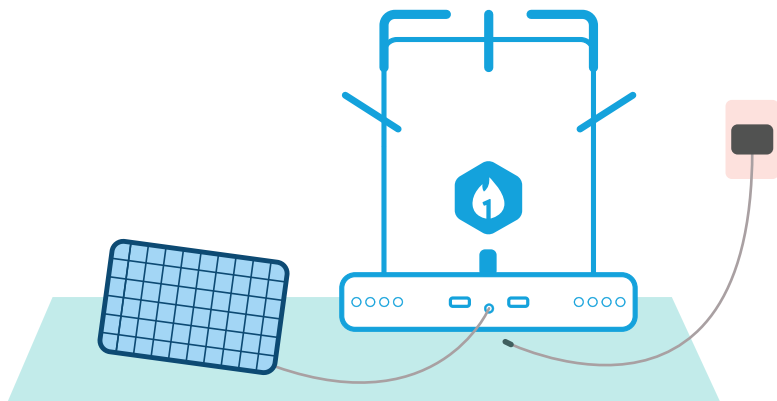


**Light the pellets** then begin cooking



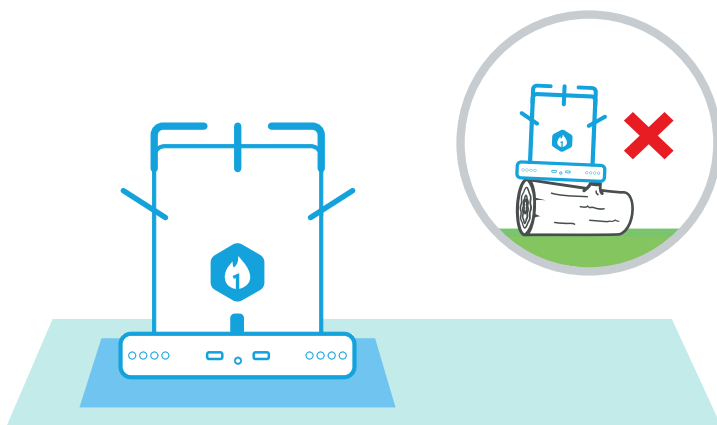
# Setting up your ACE One

1.



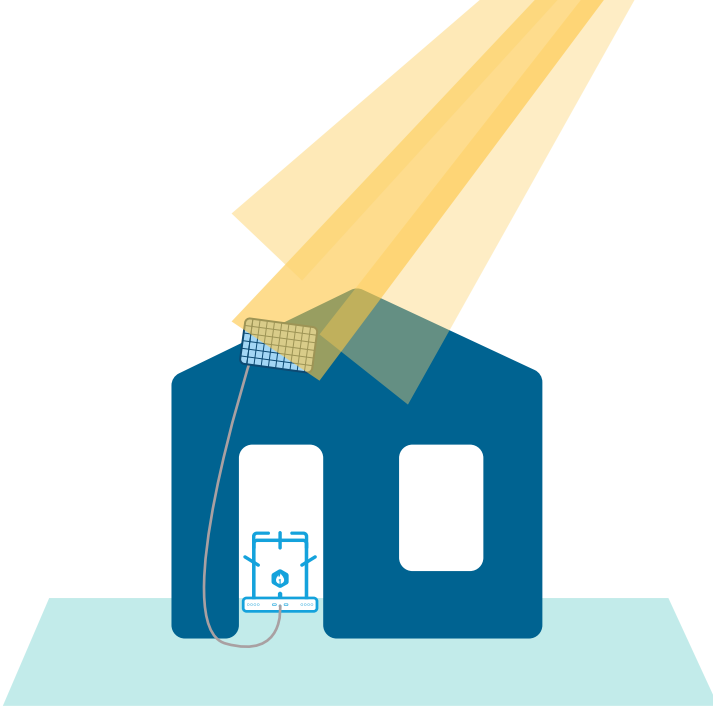
Make sure the battery is **fully charged** by using the solar panel or wall charger\*

2.



Place the stove on something **stable** and on a **clean** surface

3.

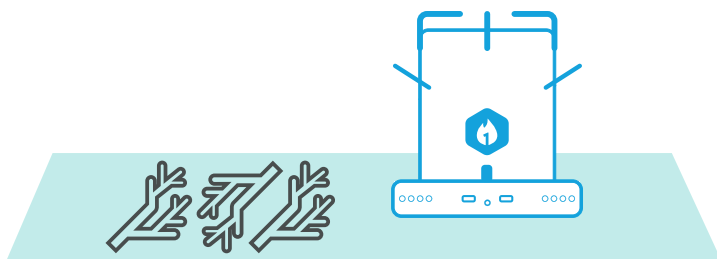


Check whether the solar panel  
is **facing** the sun



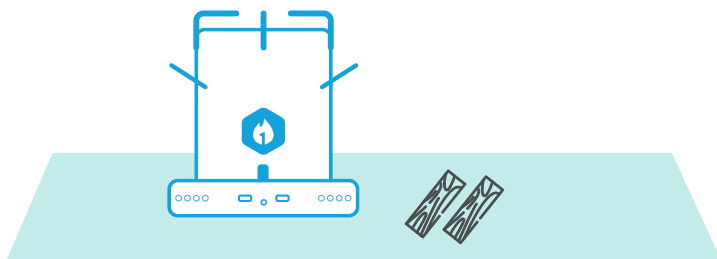
# Cooking steps

1.



Collect enough fuel

2.



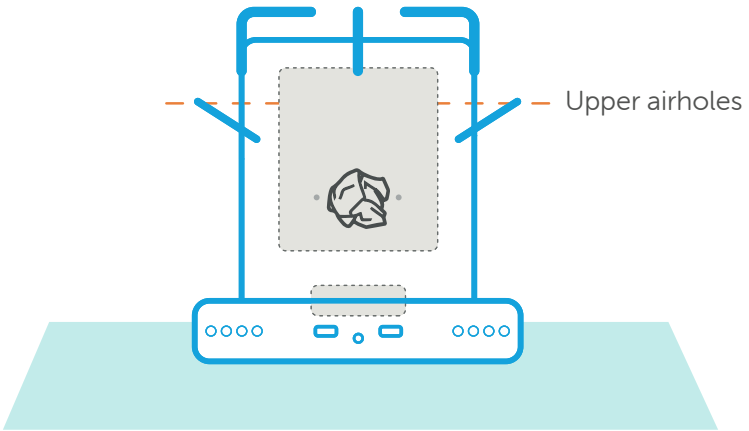
Chop the fuel into the right size

3.



Prepare the food before lighting the fire

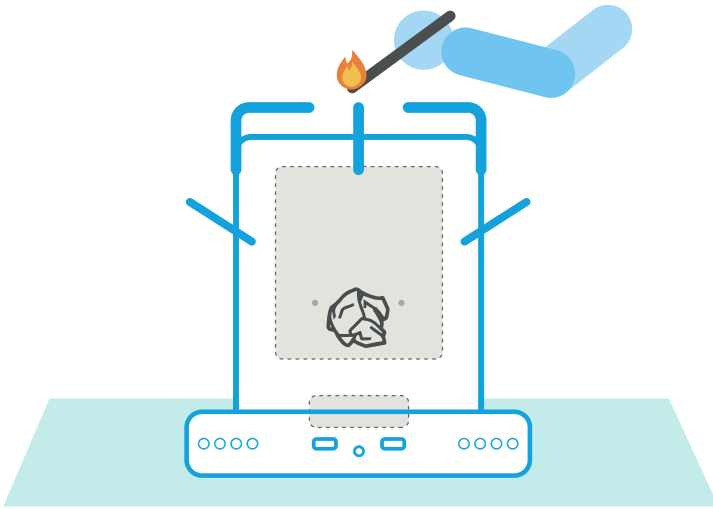
4.



Place the kindling **below** the upper airholes

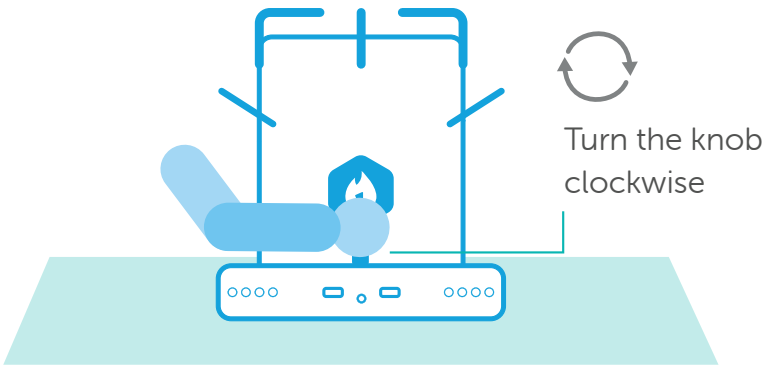


5.



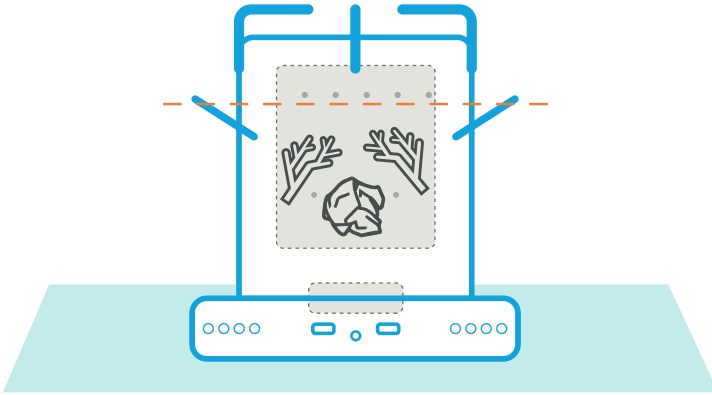
Light the kindling in a **well-ventilated** space

6.



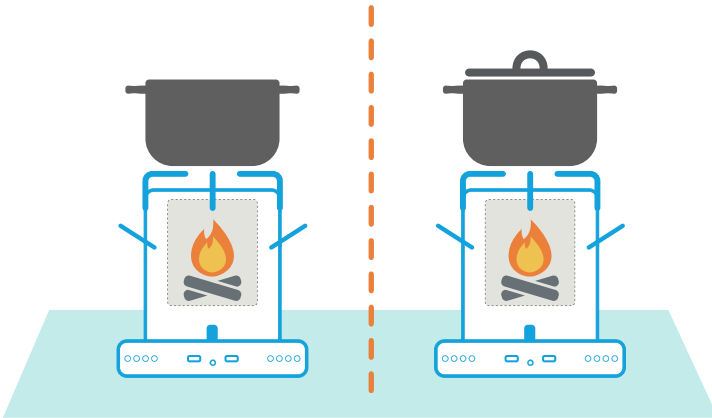
Wait for the fire to begin spreading,  
then gently **turn the fan on low**

7.



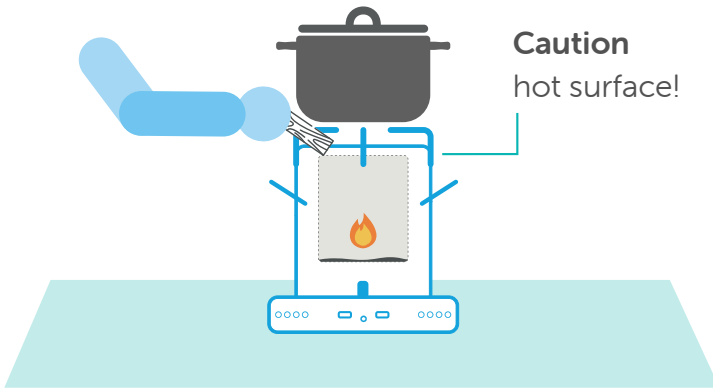
Begin adding the **small pieces of wood**, wait for them to catch light, **then increase the fan speed**

8.



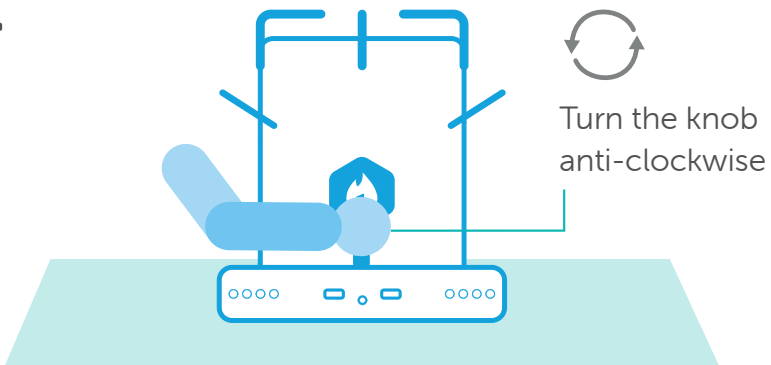
Once the fire is strong, start cooking and use a **lid** if possible

9.



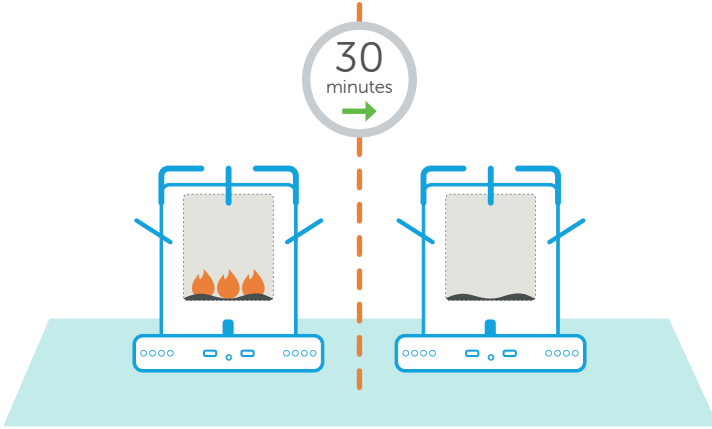
When refilling the ACE 1 with fuel,  
**be careful of hot surfaces**

10.



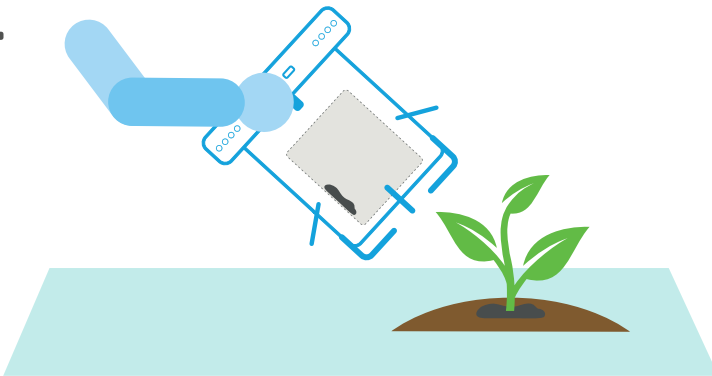
Turn the fan **off** after cooking

11.



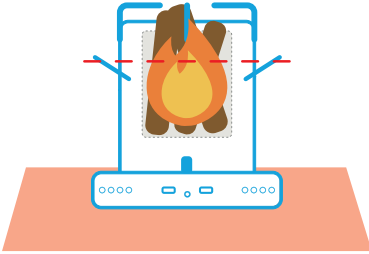
Wait until the ashes have **fully cooled down**

12.

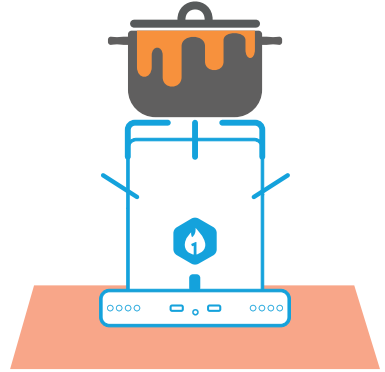


Empty the stove.  
*You can save the ash and spread it around your garden*

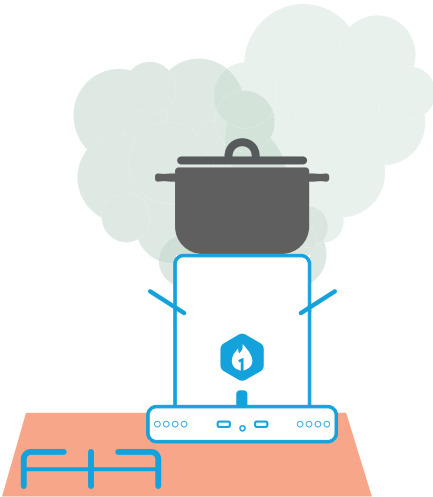
# ❌ Don't do this



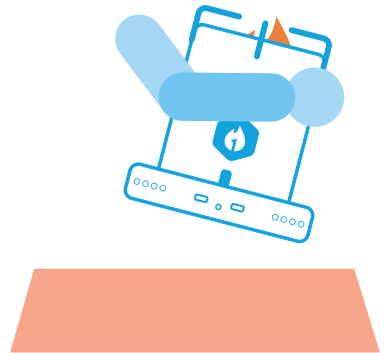
Do **not** place fuel above the airholes



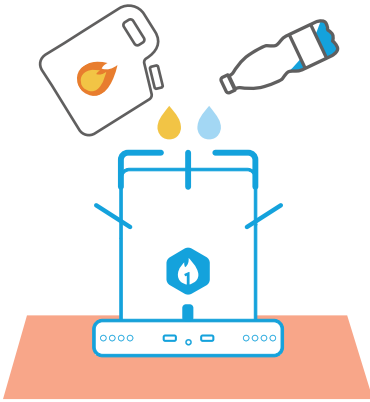
Do **not** spill food into the stove



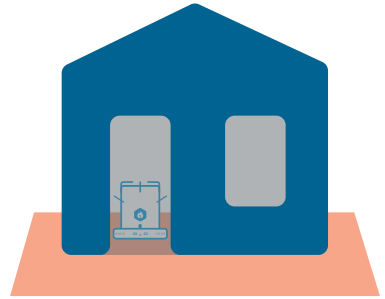
Do **not** cook on the ACE One without using the stove top



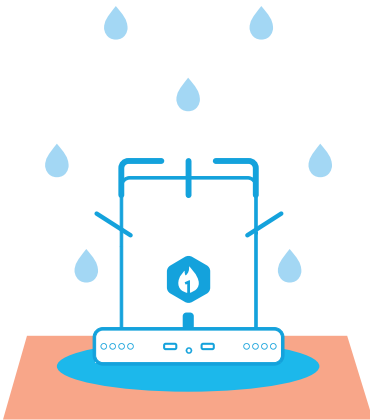
Do **not** carry the stove whilst lit



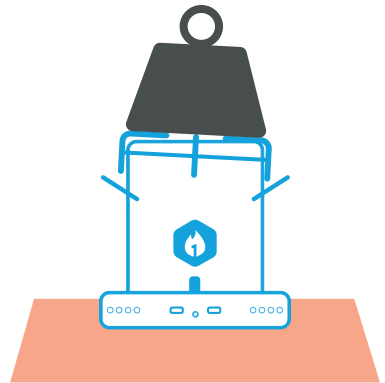
Do **not** pour flammable liquid or water into your ACE One



Do **not** use the ACE One in a closed room



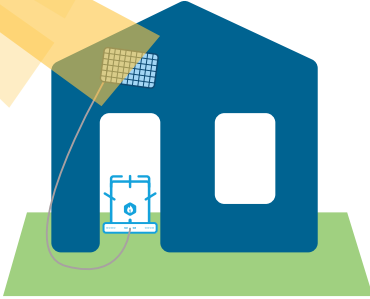
Do **not** leave your ACE One in rain or water



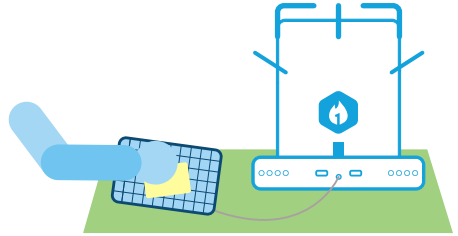
Do **not** put heavy weight on your ACE One



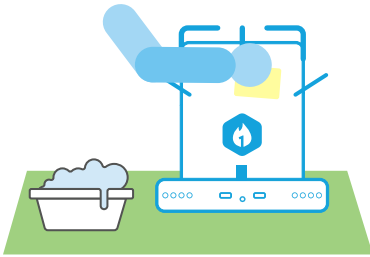
## Do this



Ideally, install your solar panel on the roof



Regularly clean the solar panel



Regularly clean your ACE One



Place your ACE One indoors when it is raining

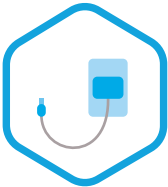


## Disclaimers

1. Caution, open fire, hot surfaces, risk of severe burns
2. Only use in well ventilated space
3. Do not use in a closed environment
4. Risk of smoke inhalation



## Optional accessories



Wall  
charger



USB  
charging cable



Wood  
pellets



Tripod





# ACE One

## Energy System



**AFRICAN CLEAN ENERGY**

Manufactured by  
African Clean Energy  
[www.africancleanenergy.com](http://www.africancleanenergy.com)



African Clean Energy